



## Location

Located in the heart of Bristol, the contemporary Hilton Garden Inn Bristol City Centre is within short walking distance of many local businesses and the shopping areas Cabot Circus and Broadmead. Bristol Temple Meads train station is only 300 yards away and Bristol International Airport is 10 miles from the hotel with the airport coach service stopping directly outside the hotel at regular intervals during peak times.

## Guest Facilities & Services

- Modern function rooms with natural daylight and air conditioning, ideal for up to 50 people theatre style.
- 167 Bedrooms – refurbished in 2012, each with an iMac multimedia solution.
- City Café restaurant provides dining for up to 90 guest, plus an outdoor terrace overlooking the beautiful Temple Gardens. The City Café lounge bar suitable for casual meeting and relaxing dining.
- Complimentary Wi-Fi throughout the hotel.

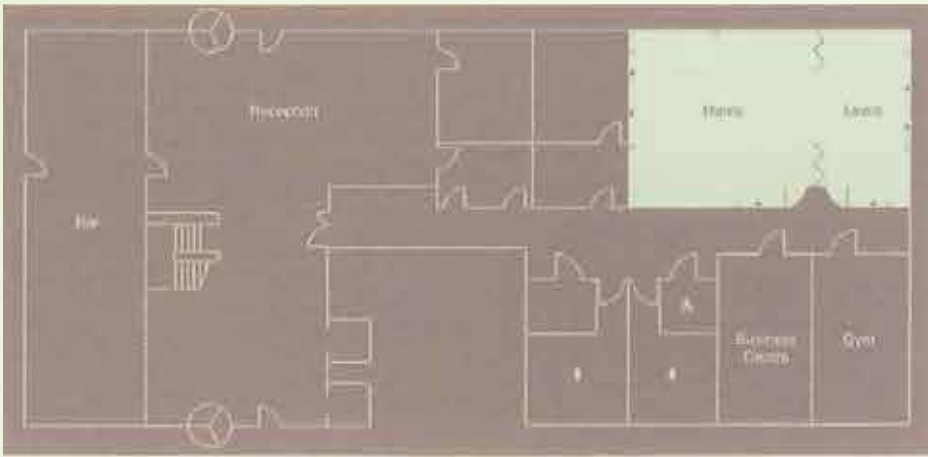
## Guest Room Features

- Complimentary wired and wireless internet and remote printing into the business centre.
- Refrigerator and complimentary tea/coffee making facilities in each room.
- Large work desk with convenient desk-level power outlets, adjustable lighting and an ergonomic chair designed by Herman Millar.
- Hair dryer, iron and ironing board, alarm clock radio with adaptor for portable music player.

## Hilton Honours

Hilton Honours is the only guest reward program that allows you to earn both hotel points and airline miles for the same stay at more than 3600 hotels worldwide.

The Hilton Honours Event Planner program means that event planners can earn Points and Miles™ for qualifying events.



Room Capacities	Dimensions (m) (l x w x h)	Theatre	Board Room	U-Shape	Classroom	Cabaret	Reception	Private Dining
Harris	6.8 x 5.8 x 2.8	30	16	14	12	-	40	16
Lewis	3.2 x 5.8 x 2.8	10	10	6	5	-	-	10
Harris and Lewis	10.0 x 5.8 x 2.8	50	28	28	26	30	60	28
Terrace	22.0 x 3.0	-	-	-	-	-	60	32

**All Inclusive Meeting Packages - With no hidden costs or fees, the all-inclusive meetings package for up to 20 delegates.**

**The package includes:**

- Full day meeting room hire
- Two Course lunch – in the room or in our restaurant.
- Two servings of tea, coffee and mineral water with snacks
- LCD projector, screen and flip chart with pad and pens.
- Stationary and sweets for all delegates.

**Prices from - £250 per day Off Peak and £400 per day Peak Days. Prices vary depending on the availability at time of booking and are subject to change depending on the number of delegates to be catered for.**